

PDZ-GEF2 Antibody
AbVantage™ Pack
Affinity Purified



Catalog No.
A310-697A

Contents: Rabbit anti-PDZ-GEF2 A301-967A
Rabbit anti-PDZ-GEF2 A301-968A

Storage: 2-8° C

Shelf Life: 1 year from date of receipt

Notes: Centrifuge tube to remove product from lid.

For In vitro laboratory use only. Not for any clinical, therapeutic, or diagnostic use in humans or animals. Not for animal or human consumption.

This product may not be resold or modified for resale without the prior written approval of Bethyl Laboratories, Inc.

Alternative Names PDZ-GEF2, PDZ domain containing guanine nucleotide exchange factor (GEF) 2, RAPGEF6, Rap guanine nucleotide exchange factor (GEF) 6, RA-GEF2.

Country of Origin: USA

PDZ-GEF2 Antibody

Affinity Purified

Produced in Rabbit

Catalog No.

A301-967A



Storage: 2-8° C

Amount: 0.1 ml at 0.2 mg/ml

Buffer: Tris-buffered Saline containing 0.1% BSA with 0.09% Sodium Azide

Shelf Life: 1 year from date of receipt

Production Procedures: Antibody was affinity purified using an epitope specific to PDZ-GEF2 immobilized on solid support.

The epitope recognized by A301-967A maps to a region between residue 625 and 675 of human PDZ domain containing guanine nucleotide exchange factor (GEF) 2 using the numbering given in entry NP_057424.2 (GeneID 51735).

Immunoglobulin concentration was determined by extinction coefficient: absorbance at 280 nm of 1.4 equals 1.0 mg of IgG.

Alternate Names: PDZ-GEF2, PDZ domain containing guanine nucleotide exchange factor (GEF) 2, RAPGEF6, Rap guanine nucleotide exchange factor (GEF) 6, RA-GEF2.

Country of Origin: USA

Notes: Centrifuge tube to remove product from lid.

For In vitro laboratory use only. Not for any clinical, therapeutic, or diagnostic use in humans or animals. Not for animal or human consumption.

This product may not be resold or modified for resale without the prior written approval of Bethyl Laboratories, Inc.

Related Products:	Rabbit anti-PDZ-GEF2 Antibody, Affinity Purified	A301-968A
	PDZ-GEF2 Antibody AbVantage™ Pack	A310-697A
	PDZ-GEF2 Blocking Peptide	BP301-967

Catalog No.

A301-967A

Reactivity: Human. Other species have not been tested.

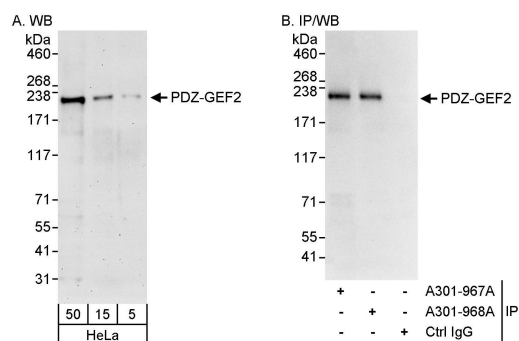
Applications: Optimal working dilutions should be determined experimentally by the investigator. Prepare working dilution immediately before use. Suggested starting dilutions are as follows:

Western Blot: 1:2,000 to 1:10,000.

Immunoprecipitation: 2 to 5 mcg/mg lysate.

Immunohistochemistry: Not tested.

Immunocytochemistry: Not tested.



Detection of Human PDZ-GEF2 by Western Blot and Immunoprecipitation. *Samples:* Whole cell lysate (5, 15 and 50 mcg for WB; 1 mg for IP, 20% of IP loaded) from HeLa cells. *Antibodies:* Affinity purified rabbit anti-PDZ-GEF2 antibody A301-967A used for WB at 0.04 mcg/ml (A) and 1 mcg/ml (B) and used for IP at 3 mcg/mg lysate. PDZ-GEF2 was also immunoprecipitated by rabbit anti-PDZ-GEF2 antibody A301-968A, which recognizes a downstream epitope. For blotting immunoprecipitated PDZ-GEF2, the ReliaBLOT® Reagents and Procedures (Cat. No. WB120) were used. *Detection:* Chemiluminescence with exposure times of 3 minutes (A) and 30 seconds (B).

Catalog No.

A301-967A

MATERIAL SAFETY DATA SHEET

Contents Description

This product contains Rabbit immunoglobulin G (IgG) protein in Tris-buffered Saline containing 0.1% BSA with 0.09% Sodium Azide.

Hazardous Ingredients

Rabbit IgG Protein - No known toxicity for this biological material.

Sodium Azide (NaN_3) - AZIDE FORMS EXPLOSIVE CHEMICAL COMPOUNDS WITH LEAD AND COPPER PLUMBING. CARE MUST BE TAKEN TO WASH WASTE DOWN DRAINS WITH LARGE VOLUMES OF WATER.
LD50 oral mouse - 27 mg/kg.

Wash all affected areas with large volumes of water and if swallowed consult your physician immediately.

The above information is believed to be correct but does not purport to be all-inclusive and is intended to be used only as a guide. Bethyl Laboratories, Inc. shall not be liable or responsible in any way for use of either this information or the material supplied. Disposal of hazardous material may be subject to federal, state, or local laws or regulations.

PDZ-GEF2 Antibody

Affinity Purified

Produced in Rabbit

Catalog No.

A301-968A



Storage:	2-8° C
Amount:	0.1 ml at 0.2 mg/ml
Buffer:	Tris-buffered Saline containing 0.1% BSA with 0.09% Sodium Azide
Shelf Life:	1 year from date of receipt
Production Procedures:	Antibody was affinity purified using an epitope specific to PDZ-GEF2 immobilized on solid support. The epitope recognized by A301-968A maps to a region between residue 1551 and 1601 of human PDZ domain containing guanine nucleotide exchange factor (GEF) 2 using the numbering given in entry NP_057424.2 (GeneID 51735). Immunoglobulin concentration was determined by extinction coefficient: absorbance at 280 nm of 1.4 equals 1.0 mg of IgG.
Alternate Names:	PDZ-GEF2, PDZ domain containing guanine nucleotide exchange factor (GEF) 2, RAPGEF6, Rap guanine nucleotide exchange factor (GEF) 6, RA-GEF2.
Country of Origin:	USA
Notes:	Centrifuge tube to remove product from lid. For In vitro laboratory use only. Not for any clinical, therapeutic, or diagnostic use in humans or animals. Not for animal or human consumption. This product may not be resold or modified for resale without the prior written approval of Bethyl Laboratories, Inc.
Related Products:	Rabbit anti-PDZ-GEF2 Antibody, Affinity Purified A301-967A PDZ-GEF2 Antibody AbVantage™ Pack A310-697A PDZ-GEF2 Blocking Peptide BP301-968

Catalog No.

A301-968A

Reactivity: Human. Other species have not been tested.

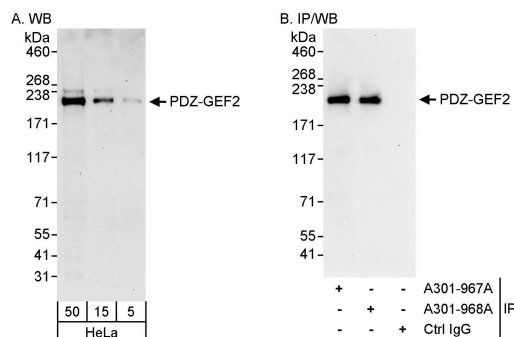
Applications: Optimal working dilutions should be determined experimentally by the investigator. Prepare working dilution immediately before use. Suggested starting dilutions are as follows:

Western Blot: 1:2,000 to 1:10,000.

Immunoprecipitation: 2 to 5 mcg/mg lysate.

Immunohistochemistry: Not tested.

Immunocytochemistry: Not tested.



Detection of Human PDZ-GEF2 by Western Blot and Immunoprecipitation. *Samples:* Whole cell lysate (5, 15 and 50 mcg for WB; 1 mg for IP, 20% of IP loaded) from HeLa cells. *Antibodies:* Affinity purified rabbit anti-PDZ-GEF2 antibody A301-968A used for WB at 0.04 mcg/ml (A) and 1 mcg/ml (B) and used for IP at 3 mcg/mg lysate. PDZ-GEF2 was also immunoprecipitated by rabbit anti-PDZ-GEF2 antibody A301-967A, which recognizes an upstream epitope. For blotting immunoprecipitated PDZ-GEF2, the ReliaBLOT® Reagents and Procedures (Cat. No. WB120) were used. *Detection:* Chemiluminescence with exposure times of 3 minutes (A) and 10 seconds (B).

Catalog No.

A301-968A

MATERIAL SAFETY DATA SHEET

Contents Description

This product contains Rabbit immunoglobulin G (IgG) protein in Tris-buffered Saline containing 0.1% BSA with 0.09% Sodium Azide.

Hazardous Ingredients

Rabbit IgG Protein - No known toxicity for this biological material.

Sodium Azide (NaN_3) - AZIDE FORMS EXPLOSIVE CHEMICAL COMPOUNDS WITH LEAD AND COPPER PLUMBING. CARE MUST BE TAKEN TO WASH WASTE DOWN DRAINS WITH LARGE VOLUMES OF WATER.
LD50 oral mouse - 27 mg/kg.

Wash all affected areas with large volumes of water and if swallowed consult your physician immediately.

The above information is believed to be correct but does not purport to be all-inclusive and is intended to be used only as a guide. Bethyl Laboratories, Inc. shall not be liable or responsible in any way for use of either this information or the material supplied. Disposal of hazardous material may be subject to federal, state, or local laws or regulations.