

AKAP8L/HA95 Antibody

Affinity Purified

Produced in Rabbit

Catalog No.

A301-365A



Storage: 2-8° C

Amount: 0.1 ml at 0.2 mg/ml

Buffer: Tris-buffered Saline containing 0.1% BSA with 0.09% Sodium Azide

Shelf Life: 1 year from date of receipt

Production Procedures: Antibody was affinity purified using an epitope specific to AKAP8L/HA95 immobilized on solid support.

The epitope recognized by A301-365A maps to a region between residue 525 and 575 of human A kinase (PRKA) anchor protein 8-like (helicase A-binding protein 95 kDa) using the numbering given in entry NP_055186.2 (GeneID 26993).

Immunoglobulin concentration was determined by extinction coefficient: absorbance at 280 nm of 1.4 equals 1.0 mg of IgG.

Alternate Names: AKAP8L, AKAP-8L, A kinase (PRKA) anchor protein 8-like, HA95, HAP95, helicase A-binding protein 95 kDa, NAKAP, NAKAP95, neighbor of A kinase anchoring protein 95.

Country of Origin: USA

Notes: Centrifuge tube to remove product from lid.

For In vitro laboratory use only. Not for any clinical, therapeutic, or diagnostic use in humans or animals. Not for animal or human consumption.

This product may not be resold or modified for resale without the prior written approval of Bethyl Laboratories, Inc.

Related Products:	Rabbit anti-AKAP8L/HA95 Antibody, Affinity Purified	A301-366A
	AKAP8L/HA95 Antibody AbVantage™ Pack	A310-472A
	AKAP8L/HA95 Blocking Peptide	BP301-365

Catalog No.

A301-365A

Reactivity: Human. Other species have not been tested.

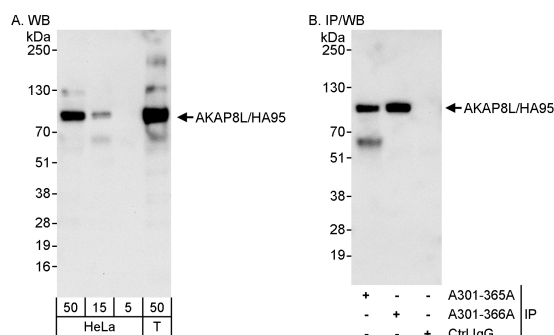
Applications: Optimal working dilutions should be determined experimentally by the investigator. Prepare working dilution immediately before use. Suggested starting dilutions are as follows:

Western Blot: 1:2,000 to 1:10,000.

Immunoprecipitation: 2 to 5 mcg/mg lysate.

Immunohistochemistry: Not tested.

Immunocytochemistry: Not tested.



Detection of Human AKAP8L/HA95 by Western Blot and Immunoprecipitation. *Samples:* Whole cell lysate from HeLa (5, 15 and 50 mcg for WB; 1 mg for IP, 20% of IP loaded) and 293T (T; 50 mcg) cells. *Antibodies:* Affinity purified rabbit anti-AKAP8L/HA95 antibody A301-365A used for WB at 0.04 mcg/ml (A) and 1 mcg/ml (B) and used for IP at 3 mcg/mg lysate. AKAP8L/HA95 was also immunoprecipitated by rabbit anti-AKAP8L/HA95 antibody A301-366A, which recognizes a downstream epitope. For blotting immunoprecipitated AKAP8L/HA95, ReliaBLOT® Reagents and Procedures (Cat. No. WB120) were used. *Detection:* Chemiluminescence with exposure times of 30 seconds (A) and 3 seconds (B).

Catalog No.

A301-365A

MATERIAL SAFETY DATA SHEET

Contents Description

This product contains Rabbit immunoglobulin G (IgG) protein in Tris-buffered Saline containing 0.1% BSA with 0.09% Sodium Azide.

Hazardous Ingredients

Rabbit IgG Protein - No known toxicity for this biological material.

Sodium Azide (NaN_3) - AZIDE FORMS EXPLOSIVE CHEMICAL COMPOUNDS WITH LEAD AND COPPER PLUMBING. CARE MUST BE TAKEN TO WASH WASTE DOWN DRAINS WITH LARGE VOLUMES OF WATER.
LD50 oral mouse - 27 mg/kg.

Wash all affected areas with large volumes of water and if swallowed consult your physician immediately.

The above information is believed to be correct but does not purport to be all-inclusive and is intended to be used only as a guide. Bethyl Laboratories, Inc. shall not be liable or responsible in any way for use of either this information or the material supplied. Disposal of hazardous material may be subject to federal, state, or local laws or regulations.