

# AKAP8/AKAP95 Antibody

*Affinity Purified*

*Produced in Rabbit*

**Catalog No.**

A301-062A



**Storage:** 2-8° C

**Amount:** 0.1 ml at 0.2 mg/ml

**Buffer:** Tris-buffered Saline containing 0.1% BSA with 0.09% Sodium Azide

**Shelf Life:** 1 year from date of receipt

**Production Procedures:** Antibody was affinity purified using an epitope specific to AKAP8/AKAP95 immobilized on solid support.

The epitope recognized by A301-062A maps to a region between residue 642 and the C-terminus (residue 692) of human A-kinase anchor protein 8 using the numbering given in entry NP\_005849.1 (GeneID 10270).

Immunoglobulin concentration was determined by extinction coefficient: absorbance at 280 nm of 1.4 equals 1.0 mg of IgG.

**Alternate Names:** AKAP8, AKAP-8, A kinase (PRKA) anchor protein 8, AKAP95, A kinase (PRKA) anchor protein 95 kDa.

**Country of Origin:** USA

**Notes:** Centrifuge tube to remove product from lid.

For In vitro laboratory use only. Not for any clinical, therapeutic, or diagnostic use in humans or animals. Not for animal or human consumption.

**This product may not be resold or modified for resale without the prior written approval of Bethyl Laboratories, Inc.**

<b>Related Products:</b>	Rabbit anti-AKAP8/AKAP95 Antibody, Affinity Purified	A301-061A
	AKAP8/AKAP95 Antibody AbVantage™ Pack	A310-346A
	AKAP8/AKAP95 Blocking Peptide	BP301-062

## Catalog No.

A301-062A

**Reactivity:** Human. Other species have not been tested.

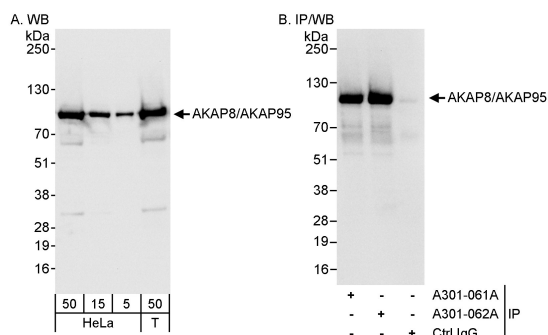
**Applications:** Optimal working dilutions should be determined experimentally by the investigator. Prepare working dilution immediately before use. Suggested starting dilutions are as follows:

Western Blot: 1:2,000 to 1:10,000.

Immunoprecipitation: 2 to 5 mcg/mg lysate.

Immunohistochemistry: Not tested.

Immunocytochemistry: Not tested.



**Detection of Human AKAP8/AKAP95 by Western Blot and Immunoprecipitation.** *Samples:* Whole cell lysate from HeLa (5, 15 and 50 mcg for WB; 1 mg for IP, 20% of IP loaded) and 293T (T; 50 mcg) cells. *Antibodies:* Affinity purified rabbit anti-AKAP8/AKAP95 antibody A301-062A used for WB at 0.04 mcg/ml (A) and 1 mcg/ml (B) and used for IP at 3 mcg/mg lysate. AKAP8/AKAP95 was also immunoprecipitated by rabbit anti-AKAP8/AKAP95 antibody A301-061A, which recognizes an upstream epitope. For blotting immunoprecipitated AKAP8/AKAP95, ReliaBLOT™ Reagents and Procedures (Cat. No. WB120) were used. *Detection:* Chemiluminescence with exposure times of 3 seconds (A and B).

**Catalog No.**

A301-062A

---

## **MATERIAL SAFETY DATA SHEET**

### **Contents Description**

This product contains Rabbit immunoglobulin G (IgG) protein in Tris-buffered Saline containing 0.1% BSA with 0.09% Sodium Azide.

### **Hazardous Ingredients**

Rabbit IgG Protein - No known toxicity for this biological material.

Sodium Azide ( $\text{NaN}_3$ ) - AZIDE FORMS EXPLOSIVE CHEMICAL COMPOUNDS WITH LEAD AND COPPER PLUMBING. CARE MUST BE TAKEN TO WASH WASTE DOWN DRAINS WITH LARGE VOLUMES OF WATER.  
LD50 oral mouse - 27 mg/kg.

Wash all affected areas with large volumes of water and if swallowed consult your physician immediately.

The above information is believed to be correct but does not purport to be all-inclusive and is intended to be used only as a guide. Bethyl Laboratories, Inc. shall not be liable or responsible in any way for use of either this information or the material supplied. Disposal of hazardous material may be subject to federal, state, or local laws or regulations.