

MSI2 Western Blot Kit



ARPK41112_T100

1 Kit
NP_620412**Description:**

The MSI2 Western Blot Kit provides all the reagents that are required for conducting high quality western blot analysis. Conditions and protocols have been optimized for easy visualization of the MSI2 protein target. Primary Target-Specific Antibody and Secondary HRP Conjugated Antibody are included to facilitate rapid detection of the target protein. The enclosed Positive Control Cell Lysate can be included in the western blot procedure in order to ensure that the antibody is functioning properly and successfully detecting the target protein. The peptide used to generate the primary antibody has also been enclosed to facilitate Peptide Blocking studies to confirm the specificity of the Primary Antibodies binding affinity.

Western Blots / Kit:

25

Species Reactivity:

Human

Primary Antibody:

100µg MSI2, Catalog# ARPK41112_T100, Rabbit Polyclone, Protein A purified, Predict MW 36kDa

Secondary Antibody:

4µg HRP Conjugated Goat Anti-Rabbit IgG(AVIHRP-GAR)

Positive Control Lysate:

625µg HepG2 Cell Lysate (AHL001)

Blocking Peptide:

100µg MSI2 Peptide(P22480)

50AA Region Containing 14AA Immunogen:

DSLRDYFSKFGI RECMVMRDP TTKRSRGGFVTFADPASVDKVLGQPHH

Reconstitution and Storage:

Primary Antibody 100µl dd H₂O, Secondary Antibody 50µl dd H₂O, Cell Lysate 125µl dd H₂O, Peptide 100µl dd H₂O. Working stock 4°, Long Term Storage -20° Aliquoted

Instructions:

[Western Blot Kit Instruction Manual](#)

Western Blot Protocol:

[Western Blot Protocol](#)

Peptide Blocking Protocol:

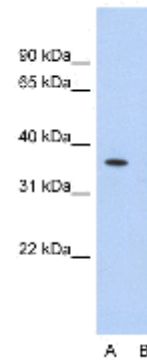
[Western Blot Peptide Competition Assay Protocol](#)

Peptide Datasheet:

[P22480 Peptide Immunogen Data Sheet.pdf](#)

Suggested starting concentrations are provided. Optimal dilutions should be determined by end-user. Differences in calculated versus apparent molecular weight may be due to post-translational modifications or protein hydrophobicity. For research use only not for diagnostic, human, or veterinary use.

No products are to be construed as a recommendation for use in violation of any patent. Our warranty is limited to the price paid for the product. Standard laboratory practices should be followed when handling this material. Appropriate measures should be taken to avoid inhalation, skin, and eye contact.

Peptide Blocking Immunoblot**Anti-MSI2 Western Blot & Peptide Block Validation**

Kit Catalog Number: ARPK41112_T100
Lot Number: QC9777
Primary Antibody: MSI2#ARPK41112_T100
Lysate: HepG2 Cell
Peptide #: P22480

Lane A: Primary Antibody
Lane B: Primary Antibody + Blocking Peptide

Primary Antibody Concentration: 2.5µg/ml
Peptide Concentration: 2.0µg/ml
Lysate Quantity: 25µg/lane
Gel Concentration: 12%

ARPK41112-QC9777-BWB.jpg