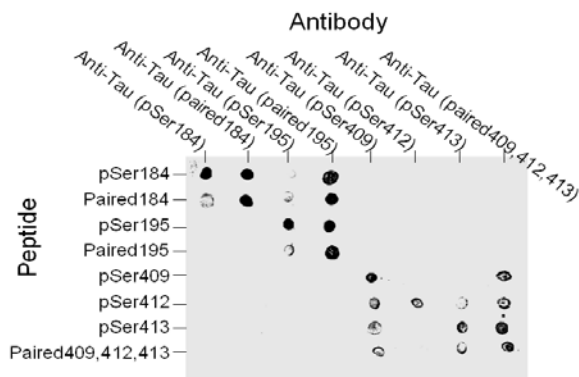


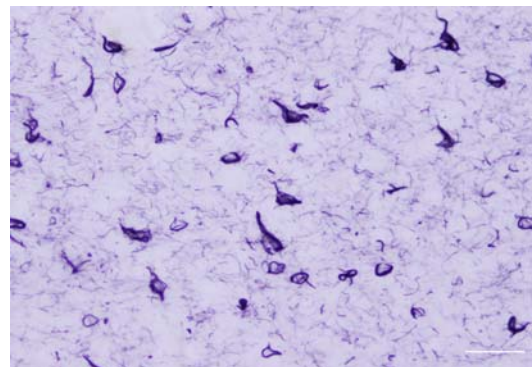


Product Data Sheet

Product Name:	Anti-Tau (pSer184), human
Catalog Number:	55413
Lot Number:	See label on vial
Product Description:	This rabbit polyclonal antibody is supplied as an epitope-affinity purified rabbit IgG 50 µg in 250 µl (0.2 mg/ml) of 1x PBS (pH 7.4) containing 0.05% sodium azide.
Immunogen:	A synthetic phosphopeptide (TPP-pS-SGE) corresponding to human Tau at the phosphorylated site of Serine 184.
Species Reactivity:	This antibody was designed for human Tau phosphorylated at the position of Serine 184. The antibody was evaluated for specificity with a dot blot assay using synthetic Tau peptides. It only recognized the phosphorylated serine 184 of human Tau, not other phosphorylated sites or non-phosphorylated Tau.
Application Notes:	The following concentration ranges are recommended starting points for this product. The investigator should determine the optimal working concentrations for specific applications. ELISA for immunizing peptide: 1: 5,000-20,000 Western Blot: 1: 500-1,000 Immunohistochemistry: 1: 200



Dot blot analysis of anti-specific phosphorylated Tau antibodies.



IHC of neurofibrillary tangles and dystrophic neurites in plaques of entorhinal cortex of AD brain stained with anti-Tau (pSer184) (cat# 55413), biotinylated secondary antibody avidin-biotin-HRP, visualization by heavy metal intensification of DAB, 20X objective (image courtesy of Dr. C. Schwab, Univ. of British Columbia, Vancouver, Canada).

Background:

Tau is a collection of microtubule-associated proteins that is involved in microtubule assembly and stabilization (1). In adult human brain, 6 isoforms, ranging between 352 and 441 amino acids in length, are produced as a result of alternative RNA splicing (2, 3). The expression of tau isoforms is developmentally regulated, as only the smallest tau polypeptide is expressed in the fetal brain. Hyperphosphorylated Tau is the major component of the paired helical filament of Alzheimer's disease. Anti-phosphor-Tau antibodies are used to identify specific amino acids that are phosphorylated in Tau from normal brains and Alzheimer's disease brains. The Tau proteins, especially in developing brains and in Alzheimer brains, can be found to be phosphorylated *in vivo* at many different sites (4).

References:

1. Cleveland DW, et al (1977) J. Mol. Biol. 116, 207-225
2. Goedert M, et al (1989) Neuron 3, 519-526.
3. Geodert M, et al (1989) EMBO J. 8, 393-399.
4. Billingsley M et al (1997) Biochem J 323, 577-591.

Storage:

Store at 2-8 °C for up to 12 months. Avoid repeated freezing and thawing.

Related Products:

[Check](#) our website for more anti-Tau antibodies.

Compatible Secondary Antibodies:

Catalog #	Goat anti-Rabbit IgG (H+L)
28176	Unconjugated
28176-AMCA	AMCA Labeled
28176-FAM	FAM Labeled
28176-FITC	FITC Labeled
28176-TAMRA	TAMRA Labeled
28176-H488	HiLyte Fluor™ 488 Labeled
28176-H555	HiLyte Fluor™ 555 Labeled
28176-H594	HiLyte Fluor™ 594 Labeled
28176-H647	HiLyte Fluor™ 647 Labeled
28176-H680	HiLyte Fluor™ 680 Labeled
28176-H750	HiLyte Fluor™ 750 Labeled
61056-H488	Highly Cross-adsorbed, HiLyte Fluor™ 488 Labeled
61056-H555	Highly Cross-adsorbed, HiLyte Fluor™ 555 Labeled
61056-H594	Highly Cross-adsorbed, HiLyte Fluor™ 594 Labeled
61056-H647	Highly Cross-adsorbed, HiLyte Fluor™ 647 Labeled
61056-H680	Highly Cross-adsorbed, HiLyte Fluor™ 680 Labeled
61056-H750	Highly Cross-adsorbed, HiLyte Fluor™ 750 Labeled
28177	Highly Cross-adsorbed, HRP Labeled
28178	Highly Cross-adsorbed, AP Labeled
28179	Highly Cross-adsorbed, Biotin Labeled

This product is for *in vitro* research use only.