



Anti- β -Actin (NT)

(Beta actin)

CATALOG NO.: 54591

BACKGROUND:

Actins are highly conserved proteins that are involved in cell motility, structure and integrity, processes that are crucial for tissue development and the development of organism (reviewed in 1). The actin cytoskeleton is one of the principal drivers of cell motility and is capable of responding to complex signaling cascades. Recent evidence suggests that it may play key roles in regulating apoptosis and aging (2). Beta actin is one of six different actin isoforms which have been identified. Like GAPDH, β -actin is constitutively expressed at high levels in almost all tissues and cell lines making it ideal for use as a loading control marker in immunoblots.

SOURCE & REACTIVITY:

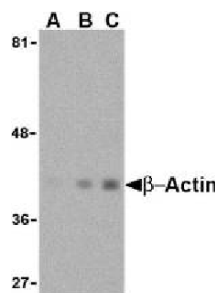
Rabbit polyclonal anti- β -actin was raised against a 16 amino acid peptide from near the amino-terminus of human β -actin (Genbank accession No. AAH02409). Anti- β -actin is human, mouse, and rat reactive.

APPLICATION:

The following concentration ranges are recommended starting points for this product.

Western Blot: 1.0-2.0 μ g/ml

Positive Control: HeLa cell lysate



Western blot analysis of β -actin in HeLa cell lysate with anti- β -actin at (A) 0.5, (B) 1 and (C) 2 μ g/ml.

Immunocytochemistry of β -actin in HeLa cells with anti- β -actin at 1 μ g/ml.



This product is for in vitro research purposes only.

RELATED PRODUCTS:

Anti- β -actin (CT), Catalog No. **54590**
Anti-GAPDH (CT), Catalog No. **54592**
Anti-GAPDH (NT), Catalog No. **54593**

STORAGE:

The antibody is supplied as purified IgG, 50 μ g in 250 μ l of 1X PBS containing 0.02% sodium azide. Store at 4 $^{\circ}$ C for up to one year. Avoid repeated freezing and thawing.

REFERENCES:

1. Lambrechts A, et al (2004) *Int. J. Biochem. Cell Biol.* 36:1890-909.
2. Gourlay CW, et al (2005) *Nat. Rev.* 6:583-9.