

Monoclonal Antibody to EGFR / ERBB1 (C-term) - Supernatant

Alternate names:	Epidermal growth factor receptor, EGF Receptor, erbB-1, c-ErbB-1, Receptor tyrosine-protein kinase erbB-1, Proto-oncogene c-ErbB-1
Catalog No.:	AM11132PU-N
Quantity:	1.0 ml
Background:	EGFR is type I receptor tyrosine kinase with sequence homology to erbB-1, 02, 03, -4. It binds to Epidermal Growth Factor (EGF), Transforming Growth Factor- α (TGF- α), Heparin-binding EGF (HB-EGF), amphiregulin, betacellulin and epiregulin. EGFR is overexpressed in tumors of breast, brain, bladder, lung, gastric, head, neck, esophagus, cervix, vulva, ovary, and endometrium. It is predominantly present in squamous cell carcinomas.
Uniprot ID:	P00533
NCBI:	9606
GeneID:	1956
Host / Isotype:	Rabbit
Clone:	SP9
Immunogen:	Synthetic peptide from C-terminus of Human EGFR protein. Remarks: Epitope: C-terminus. Molecular Weight: 170kDa
Format:	State: Liquid Tissue Culture Supernatant Buffer System: TBS buffer, pH7,5 containing 1% BSA as stabilizer and 0.09% Sodium Azide as preservative.
Applications:	Western Blot: 1/200 for 2hrs at RT. Immunohistochemistry on Paraffin Sections: 1/100 for 30 min at RT. Staining of formalin-fixed tissues requires boiling tissue sections in 10mM citrate buffer, pH 6.0 for 10 min followed by cooling at RT for 20 min. Slides must be washed in between steps. Rinse slides with PBS/0.05% Tween. <i>Positive Control:</i> Placenta and lung. Other applications not tested. Optimal dilutions are dependent on conditions and should be determined by the user.
Specificity:	This antibody recognizes EGFR. Cellular Localization: Cytoplasm and membrane. Species: Human. Others not tested.

For research and in vitro use only. Not for diagnostic or therapeutic work.

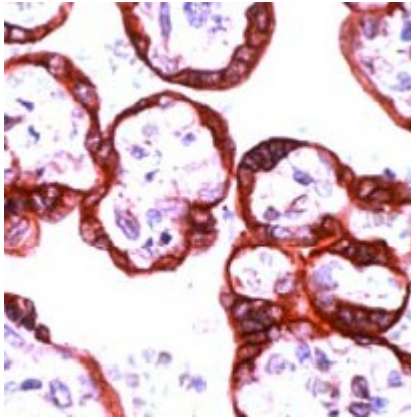
Material Safety Datasheets are available at www.acris-antibodies.com or on request.

Antibody Hotline - Technical Questions - Antibody Location Service
Free Call: 0800-2274746 (Germany only) - www.acris-antibodies.com

Storage:

Store the antibody undiluted at 2-8°C.
DO NOT FREEZE!
Shelf life: one year from despatch.

Pictures:



AM11132PU EGFR antibody staining of Human placenta.

For research and in vitro use only. Not for diagnostic or therapeutic work.

Material Safety Datasheets are available at www.acris-antibodies.com or on request.

Antibody Hotline - Technical Questions - Antibody Location Service
Free Call: 0800-2274746 (Germany only) - www.acris-antibodies.com