

Jellified Cellular Section Preparation Agent

iPGell

Jellified Cellular Fixative onto Specimen Slides

Smear Gell

For more information : http://www.funakoshi.co.jp/exports_contents/62940 (iPGell), 80449 (Smear Gell)

iPGell - Jellified Cellular Section Preparation Agent -

iPGell is a unique reagent for sectioning floating cells / 3D cultured cells. Cell suspension can be rapidly jellified without heating. No cytotoxic components are contained. Jellified sample can be soaked into fixative solution and then you can prepare a sample block (frozen / paraffin-embedded) in a manner similar to preparing a tissue block.

Making a section of floating cells or 3D cultured cells (e.g. embryoid body, spheroid) is a hard work for researchers. Cytospin, smear slide or agarose gel methods are conventional but these methods may damage your cells during drying or heating process. Moreover, for cytopspin or smear slide method, you need to restart from the beginning of sample preparation.

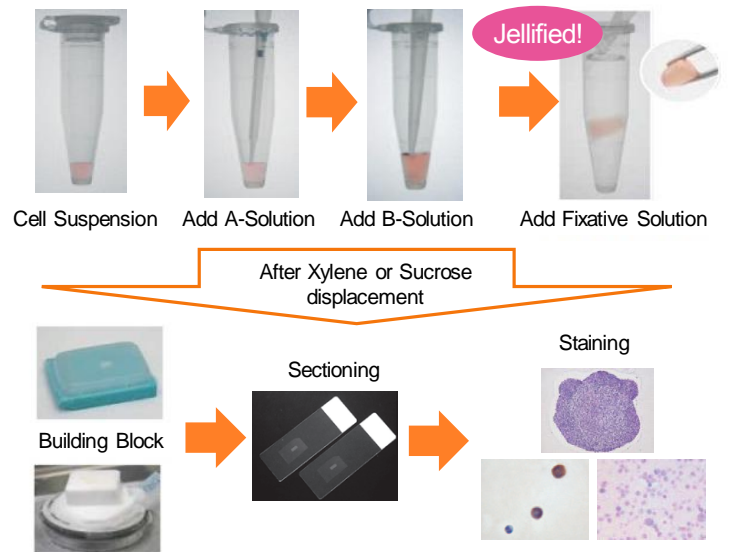
Features

- Rapid and Easy procedure (~2 minutes)
 - Just mix solution A and B
- Less damage to Cells (RNA and Protein)
 - as sample is not heated.
- Various analytical methods can be applied to one sample
 - frozen / paraffin blocks enable you to prepare a section when needed.

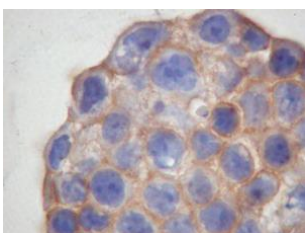
Samples

Primary cultured cells	Embryoid body
Spheroids	iPS / ES cells
Specific cell population sorted by cell sorter	

Procedure



Images



3D cultured (spheroid) cells
IHC (Frozen section, x 1,000)
Antibody A (Brown)
Counter Stain (Blue)

Gene (Blue) / Counter Stain (Pink)



Product Information

[Manufacturer : GNS]

Product Name	Size	Code	Storage
iPGell	1 kit	PG20-1	-20°C

Smear Gell

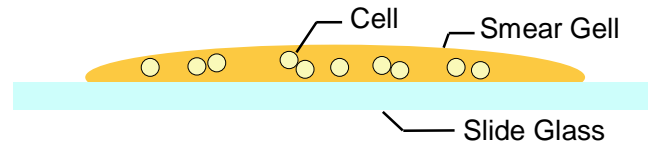


Jellified Cellular Fixative onto Specimen Slides

Smear Gell is a jelly-like reagent for mounting low number cell samples onto a specimen slide. For rapid and easy specimen slide preparation, just mix it with cell suspension and spread it out on the surface of slide.

Features

- No cytotoxic components contained.
- Cells can be attached to slide without need of cytospin. Special technique for smear preparation is not required.
- No need to prepare paraffin-embedded or frozen tissue block.
- Easy staining after fixation.



Cross Section of Prepared Sample

Cells are sterically kept in the jelly (Smear Gell).

Samples

- Sorted Cells
- Non-adherent Cells
- Clump of Cells
($< 50 \mu\text{m}$, e.g. cultured Spheroids)

Images

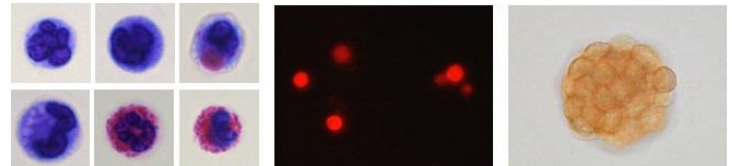


Fig.1

Fig.2

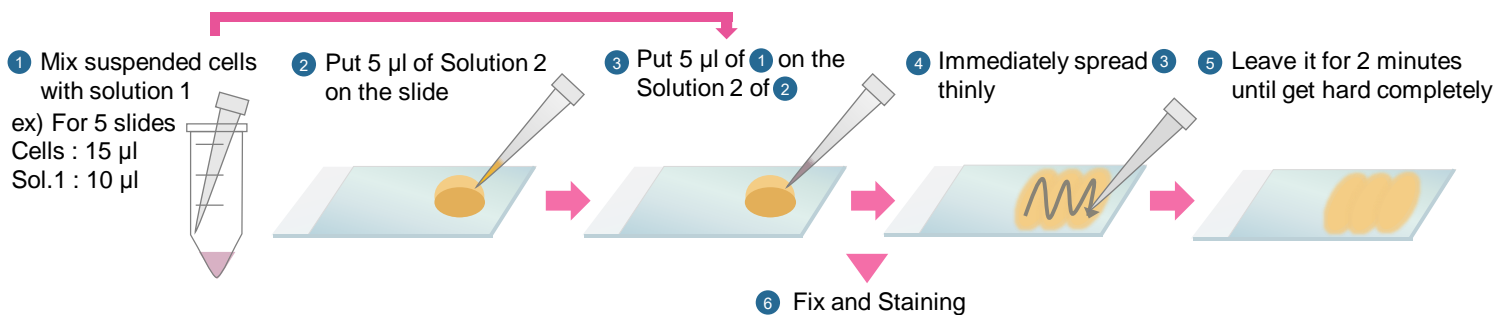
Fig.3

Fig.1 : Wright Giemsa Staining of rat peritoneal infiltrative cells.

Fig.2 : Texas Red Staining of rat peritoneal infiltrative cells.

Fig.3 : DAB Staining of cultured spheroid.

Procedure



Product Information

[Manufacturer : GNS]

Product Name	Size	Code	Storage
Smear Gell	1 kit	SG-01	-20°C

NOTE

- ※ All products here are research use only, not for diagnostic use.
- ※ Specs might be changed for improvement without notice.

- ※ Company name and product name are trademark or registered mark.
- ※ Please contact your local distributors for orders, quote request and inquiry.a

Your Local Distributor

funakoshi Co., Ltd.

Address: 9-7 Hongo 2-Chome, Bunkyo-ku,
Tokyo 113-0033 JAPAN
Phone : +81-3-5684-6296
Fax : +81-3-5684-6297
Email : export@funakoshi.co.jp